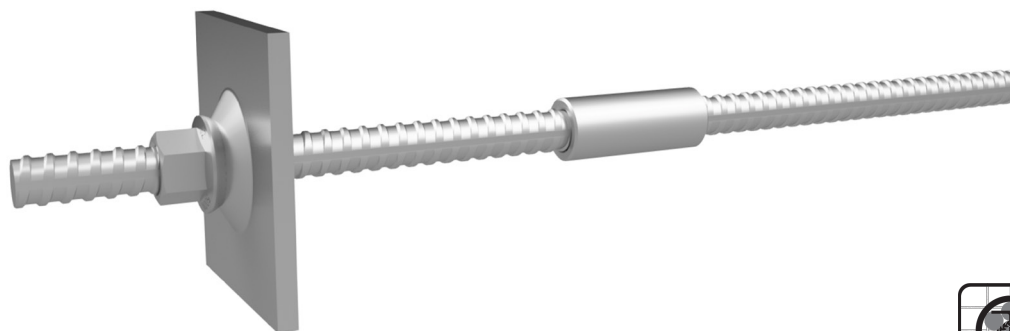


JMA500N Threadbar System



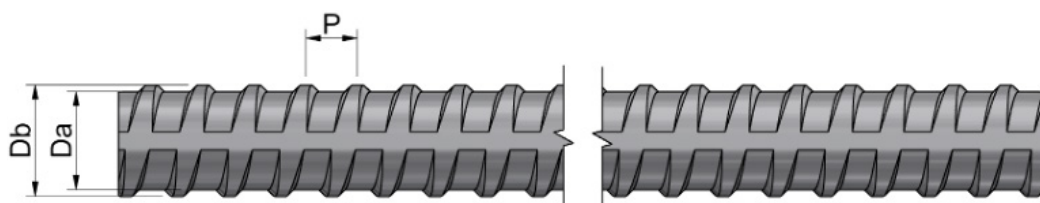
Steel Reinforcing Materials to AS/NZS 4671:2019 – D500N Threaded Bar

Features:

- A robust continuous hot-rolled thread that can be cut and coupled with ease, offering maximum adaptability to varying lengths and depths
- Conforms with AS/NZS 4671 and certified by ACRS
- Available hot dip galvanised in accordance with AS/NZS 4680 for superior corrosion resistance
- Available in continuous lengths up to 12 m

Applications:

- Permanent & temporary soil nails
- Ground anchors
- Rock bolts
- Tie rods
- Micropiles
- Concrete reinforcement
- Cogged bars

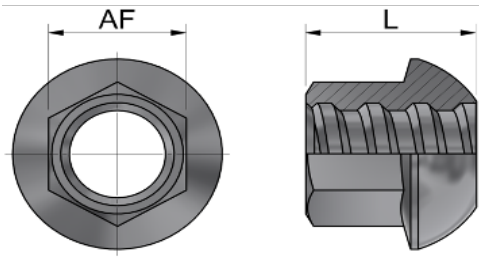


Property	Units	Value		
Steel Grade*	-	500N		
Norminal Diameter	mm	25	28	32
Yield Strength, R_e	MPa	500-650		
Minimum Ultimate Strength, R_m	MPa	550		
Minimum Yield Load	kN	246	308	402
Minimum Breaking Load	kN	270	339	442
Nominal Cross-Sectional Area	mm ²	491	616	804
Nominal Core Diameter, D_a	mm	24.4	27.3	31.2
Nominal Thread Outer Diameter, D_b	mm	27.6	30.9	36.3
Thread Pitch, P	mm	12.5	14.0	16.0
Min. Uniform Elongation, A_{gt}	%	5		
Ratio R_m/R_e	-	1.08		
Unit Mass	kg/m	3.85	4.83	6.31
Thread Direction	-	Left-Handed		

*conforms with AS/NZS 4671

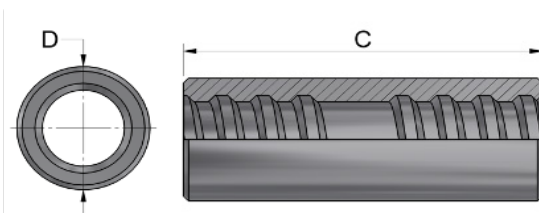
JMA500N Threadbar System

Domed Nut



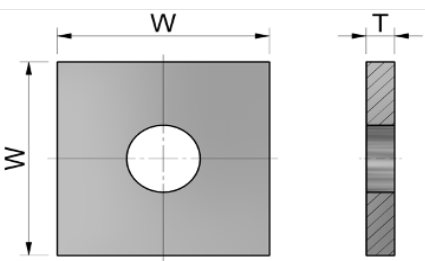
Property	Units	Value		
Nominal Bar Diameter (mm)	-	25	28	32
L	mm	45	54	57
AF	mm	41	41	46
Mass	kg	0.35	0.44	0.59
Strength/Capacity	-	Exceeds minimum/ Breaking strength of bar		

Round Coupler



Property	Units	Value		
Nominal Bar Diameter (mm)	-	25	28	32
C	mm	115	125	140
D	mm	40	45	52
Mass	kg	0.60	0.85	1.31
Strength/Capacity	-	Exceeds minimum/ Breaking strength of bar		

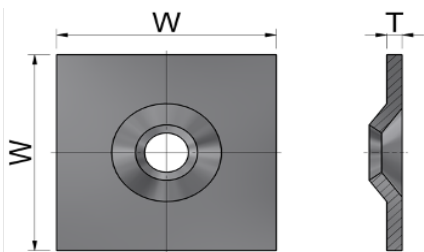
Flat Plates



Property	Units	Value		
Nominal Bar Diameter (mm)	-	25	28	32
W	mm	150	200	200
T	mm	16	16	20
Mass	kg	2.7	4.87	5.95

Custom plate sizes are available upon request

Domed Plates



Property	Units	Value		
Nominal Bar Diameter (mm)	-	25	28	32
W	mm	150	200	200
T	mm	12	12	16
Mass	kg	2.07	3.72	4.91

Custom plate sizes are available upon request

Other Accessories:

- Centralisers
- Plastic corrugated sheath
- Grout tube
- Grout gun
- End caps
- Stressing bars